

EMFA
crafting light

patnos 5
wall washer





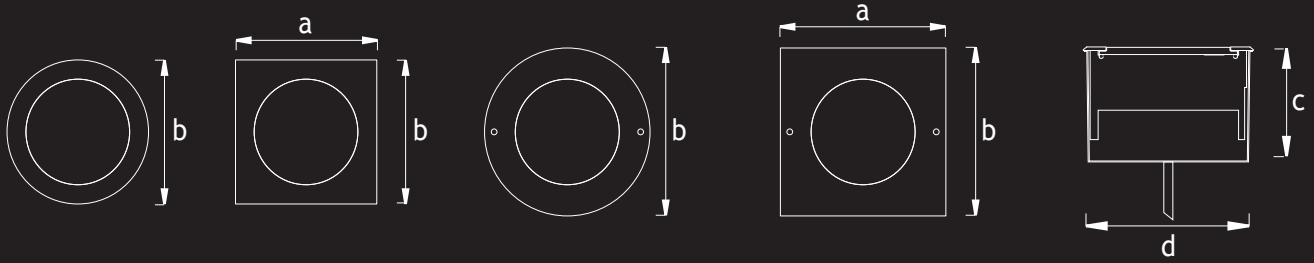
The Patnos Wall Washer combines a COB LED with a high-efficiency asymmetrical reflector resulting in an extremely homogenous light distribution.

The COB led can be run up to 25W (700mA) and is available up to 93 CRI.

The 84% efficient asymmetrical optics direct the light towards the wall and the painted glass cuts any uncomfortable glare.

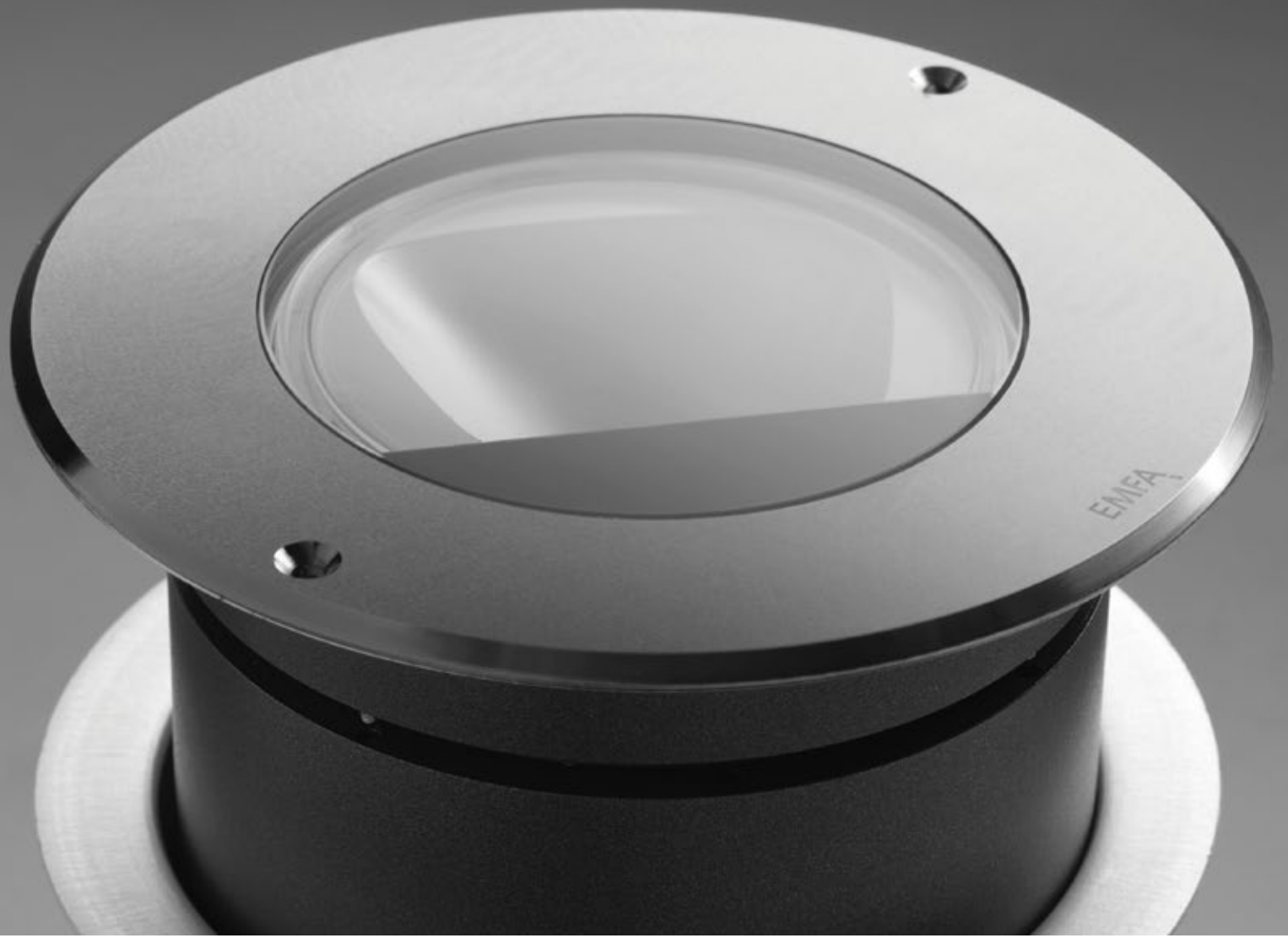
The fixture is made of a combination of a 316L stainless steel cover and die cast aluminium body painted with electrostatic powder paint.

Tempered glass, silicone gaskets and cast resin complete the fixture to make it IP67 IK10 and withstand rough environments.



| code | type | lamp | LED colors | a | b | c | d | total lighting output |
|--------|----------------|----------------------|------------|-----|-----|-----|-----|-----------------------|
| 164801 | silicone fixed | 1 x 350 mA (12W) LED | 2700 K | | 150 | 125 | 144 | 1005 lm |
| 164802 | silicone fixed | 1 x 350 mA (12W) LED | 3000 K | | 150 | 125 | 144 | 1005 lm |
| 164803 | silicone fixed | 1 x 350 mA (12W) LED | 4000 K | | 150 | 125 | 144 | 1078 lm |
| 164811 | silicone fixed | 1 x 350 mA (12W) LED | 2700 K | 150 | 150 | 125 | 144 | 1005 lm |
| 164812 | silicone fixed | 1 x 350 mA (12W) LED | 3000 K | 150 | 150 | 125 | 144 | 1005 lm |
| 164813 | silicone fixed | 1 x 350 mA (12W) LED | 4000 K | 150 | 150 | 125 | 144 | 1078 lm |
| 164821 | screw fixed | 1 x 350 mA (12W) LED | 2700 K | | 180 | 125 | 144 | 1005 lm |
| 164822 | screw fixed | 1 x 350 mA (12W) LED | 3000 K | | 180 | 125 | 144 | 1005 lm |
| 164823 | screw fixed | 1 x 350 mA (12W) LED | 4000 K | | 180 | 125 | 144 | 1078 lm |
| 164831 | screw fixed | 1 x 350 mA (12W) LED | 2700 K | 180 | 180 | 125 | 144 | 1005 lm |
| 164832 | screw fixed | 1 x 350 mA (12W) LED | 3000 K | 180 | 180 | 125 | 144 | 1005 lm |
| 164833 | screw fixed | 1 x 350 mA (12W) LED | 4000 K | 180 | 180 | 125 | 144 | 1078 lm |
| | | | | | | | | |
| 164901 | silicone fixed | 1 x 700 mA (25W) LED | 2700 K | | 150 | 125 | 144 | 1848 lm |
| 164902 | silicone fixed | 1 x 700 mA (25W) LED | 3000 K | | 150 | 125 | 144 | 1848 lm |
| 164903 | silicone fixed | 1 x 700 mA (25W) LED | 4000 K | | 150 | 125 | 144 | 1919 lm |
| 164911 | silicone fixed | 1 x 700 mA (25W) LED | 2700 K | 150 | 150 | 125 | 144 | 1848 lm |
| 164912 | silicone fixed | 1 x 700 mA (25W) LED | 3000 K | 150 | 150 | 125 | 144 | 1848 lm |
| 164913 | silicone fixed | 1 x 700 mA (25W) LED | 4000 K | 150 | 150 | 125 | 144 | 1919 lm |
| 164921 | screw fixed | 1 x 700 mA (25W) LED | 2700 K | | 180 | 125 | 144 | 1848 lm |
| 164922 | screw fixed | 1 x 700 mA (25W) LED | 3000 K | | 180 | 125 | 144 | 1848 lm |
| 164923 | screw fixed | 1 x 700 mA (25W) LED | 4000 K | | 180 | 125 | 144 | 1919 lm |
| 164931 | screw fixed | 1 x 700 mA (25W) LED | 2700 K | 180 | 180 | 125 | 144 | 1848 lm |
| 164932 | screw fixed | 1 x 700 mA (25W) LED | 3000 K | 180 | 180 | 125 | 144 | 1848 lm |
| 164933 | screw fixed | 1 x 700 mA (25W) LED | 4000 K | 180 | 180 | 125 | 144 | 1919 lm |

| | | | |
|--------------------------|---|------------------------------|------------------------------------|
| Protection Rate | IP 67 | Optical Aiming | Fixed |
| Impact Resistance | IK 10 | Light emission | Asymmetrical, indirect |
| Class | I | Beam | Wide |
| Place of Use | Exterior, interior | Lamp lumen | 1350, 1500, 2480, 2580 |
| Application | Facades, monuments, signs, trees, walls | Total Lighting Output | 1005, 1078, 1848, 1919lm |
| | | CRI | >85 |
| | | | |
| Load | 5kn | Gear | Non-dimmable electronic led driver |
| Lamp Options | LED 12W (350 mA), LED 25W (700 mA) | Cable | Potted 5m 3x0,75 h03 w-f |
| Mounting | Ground recessed | Ambient Temp | Ta < 50°C |
| Body | Die cast aluminium | Voltage | 240v a.c (24v ac or dc on request) |
| Cover | 316l stainless steel | Total power | 12W, 25W |
| Recessing box | Aluminium | | |
| Screws | 316l stainless steel | | |
| Diffuser | 8mm tempered glass | | |
| Reflector | Aluminium-coated polycarbonate | | |
| Gaskets | Silicone | | |



The fixtures come with an aluminium recessing tube for easy mounting in the ground or concrete.

A specially developed potted power cable is used to effectively bond with the cast resin and stop any water ingress.



IK 10 IP 67



code

164801
164811

code

164821
164831

global network

central region

germany

LAMP 83 Deutschland GmbH
Am Weihergraben 10
74363 Güglingen
tel: +49(0)7135 93 06 192
fax: +49(0)7135 93 06 199
kontakt@lamp83.de

france

INEDIT Lighting
Le Studio, 25, rue de Cléry
75002 Paris
tel: +33(0)1 47 00 76 76
fax: +33(0)1 47 00 87 73
contact@inedit-lighting.com

united kingdom

RIDI Lighting Ltd
Units 8 & 9 ,The Marshgate
Centre, Parkway, Harlow
Essex, CM19 5QP
tel: +44(0)1279 450882
fax: +44(0)1279 451169
info@emfa.co.uk

turkey

EMFA -
Elektrik Malzeme Fabrikasi A.S.
Davutpasa Caddesi,
Cebealibey Sokak No. 18
34020 Topkapi / Istanbul
tel: +902124822962
fax: +902124822781
emfa@emfa.com.tr

lebanon

Simon Electric Center
Mar Mikael Armenia Street
tel: +961 1 560222 333
fax: +961 1 581644
simonel@cyberia.net.lb

saudi arabia

SmartHome Trading
P O Box 43262
11561 Riyadh
tel: +966 11 201 2005
fax: +966 11 201 2414
care@smarthomeco.com

ireland

Lidacel Ltd
Unit 18 Willow Business Park,
Nangor Road, Dublin 12
tel: +353 1 4605 342
fax: +353 1 4605344
sales@lidacel.com

belgium

EURO-LUCE
Heirbaan 38, B-1570
Galmaarden, Belgium
tel: +32 54 55 71 10
fax: +32 54 55 71 15
info@euro-luce.be
www.euro-luce.eu

russia

International Lighting Solutions
Zvonarskij Pereulok House 1/1
Moscow
tel: +7 903 7926341
fax: +7 903 7926341
9706028@mail.ru

qatar

Beyond Lighting Co.
Airport Road, Doha
tel: +974 44664434
fax: +974 44673882
info@beyondlighting.net

mauritius

EME Engineering Ltd
95 Victoria Avenue,
Quatre Bornes
tel: +2304679001
fax: +2304679002
nizamm@ememauritius.com

global network

western region

canada

NOVUS DESIGN Inc.
385 St-Hubert, Laval,
H7G 2Y8, Quebec
tel: +1 888 668 8787
fax: +1 888 668 5454
ary@novuslighting.com

united states

NOVUS DESIGN Inc.
385 St-Hubert, Laval,
H7G 2Y8, Quebec
tel: +1 888 668 8787
fax: +1 888 668 5454
ary@novuslighting.com

caribbean islands

Electec
29 Wellington Road,
Cole Bay, St Maarten
tel: +1 721 544 2051
fax: +1 71 544 3641
sales@electec.info

colombia

LED-LS COLOMBIA
Carrera 14 #93-40, Of. 503
Bogotá
tel: COL + (57)(1) 636-0566
USA +1(305) 3573252
info@led-ls.com

peru

LED-LS PERU
Av. Reducto 1310, Of. 303
Lima, Perú
tel: PERU + (51)(1) 242-2630
USA +1(305) 3573252
info@led-ls.com

chile

LED-LS CHILE
La Concepción 141, Oficina 605
Providencia, Santiago de Chile
tel: CHIL + (56)(2) 2369706
USA +1(305) 3573252
info@led-ls.com

eastern region

russia

International Lighting Solutions
Zvonarskij Pereulok House 1/1,
Moscow
tel: +7 903 7926341
fax: +7 903 7926341
9706028@mail.ru

south korea

bara corporation
410 GoldTower B/D,
Manyeondong,
Seogu, Daejeon
tel: +82 42 482 4337
fax: +82 42 482 4336
bara_co@naver.com

hong kong

SPL Lighting Company Ltd
1401 Harbour Centre, 25
Harbour Road, Wanchai
tel: +852 3529 1623
fax: +852 3529 1222
info@splighting.com.hk

macau

GEOTECH Lighting & System Co.
Ltd.
Av. da Praia Grande No. 763,
Edf. Lun Pong 14-Andar-D, S.A.R
tel: +853 2835 6562
fax: +853 2835 6563
info@geotechmacau.com

new zealand

Decor Bellini Lighting Ltd
96 New North Road,
Eden Terrace, Auckland
tel: +64 9 3361504
fax: +64 9 3361581
info@decorbellini.co.nz

headquarters

EMFA
Elektrik Malzeme Fabrikasi A.S.

Davutpasa Caddesi
Cebealibey Sokak No. 18
34020 Topkapi / Istanbul
Turkey

tel: +90 212 4822962
fax: +90 212 4822781

emfa@emfa.com.tr

EMFA
crafting light 