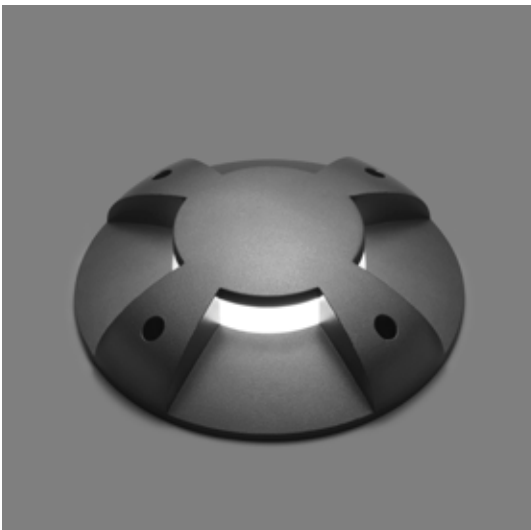


EMFA
crafting light

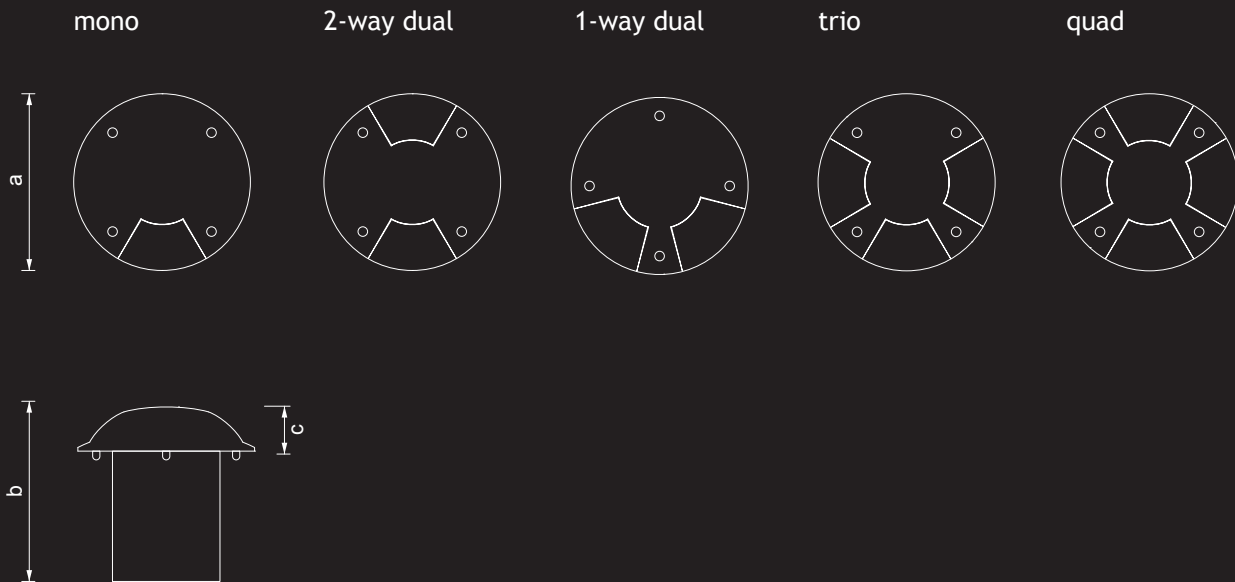
teos 3





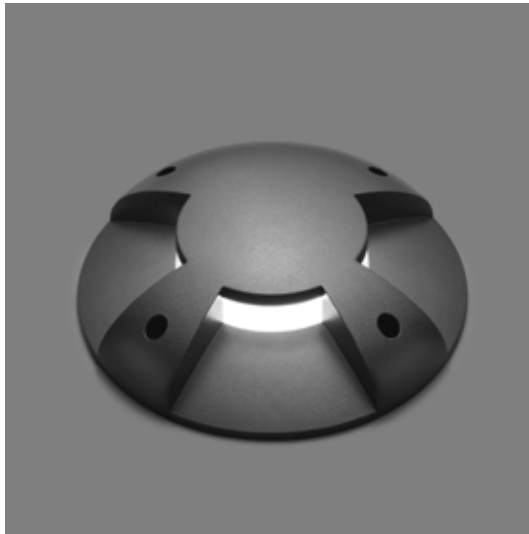
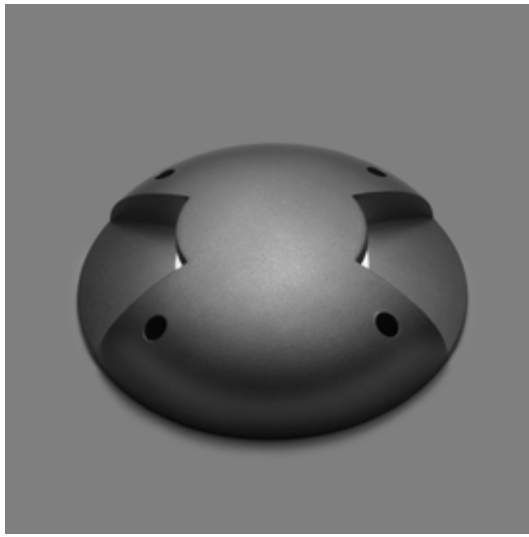
EMFA's Teos 3 Recessed Drive Over LED Fixture is specially designed to deliver high output LED light to ground surfaces of roads, carparks and pathways. This heavy duty fixture is designed to withstand the weight of large vehicles. Its robust construction allows for a maximum weight of 5000kg.

Teos 3 Quad



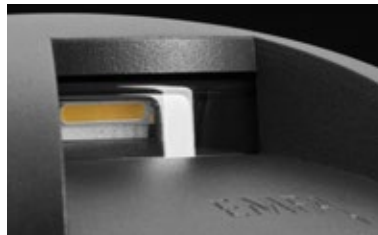
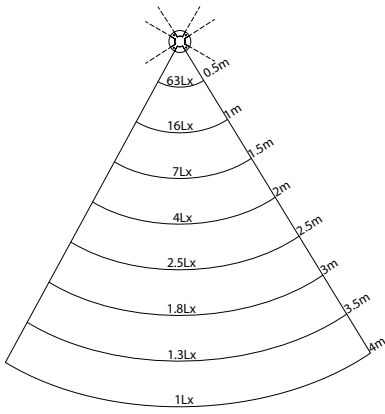
type	code	lamp	lumen	β	a	b	c	LED colours
mono	180141	1 x 4W LED (350mA)	165	fixed	240	177	60	3000K
duo 2-way	180121	2 x 4W LED (350mA)	330	fixed	240	177	60	3000K
duo 1-way	180111	2 x 4W LED (350mA)	330	fixed	240	177	60	3000K
trio	180131	3 x 4W LED (350mA)	495	fixed	240	177	60	3000K
quad	180141	4 x 4W LED (350mA)	660	fixed	240	177	60	3000K

Protection Rate	IP 67	Total Lumen Output	660, 495, 330, 165lm
Impact Resistance	IK 10	Luminous Efficacy	40, 51lm/W
Class	I	CRI	>80
Place of Use	Exterior / Interior	Total Power	16.4, 12.3, 8.2, 4.1W
Application	Roads, Carparks, Pathways	LED Lifetime	L70 = 35,000 hours B50 = 70,000 hours
Maximum Static Load	5000Kg	Gear	Electronic LED Driver
Mounting	Ground Recessed		240VAC (24VACDC, or 120VAC on request)
Body	Die Cast Aluminium	Cable Gland	2 x PG 13.5
Cover	Die Cast Aluminium	Cable	0.5m 3x0.75mm ² H05VV-F
Paint	Polyester Powder Coat	Ambient Temp	T _a < 50°C
Recessing Tube	Electrostatic Powder Paint Coated Steel	Weight	6.20kg
Screws	316L Stainless Steel	Packing Dimensions	250x250x250mm
Diffuser	Polycarbonate		
Gaskets	Silicone		
Aiming	Fixed		
LED Colours	3000K White		
Nominal Luminous Flux	1020, 765, 510, 255lm		



- Teos 3 Dual 1-Way
- Teos 3 Dual 2-Way
- Teos 3 Mono
- Teos 3 Tri

The electronic LED driver is housed in the base of the fixture. The fixture comes with 2 x PG13.5 cable glands and 0.5m cable.



IK 10 IP 67



black textured
ral 9005



black matte
ral 9005



anthracite textured
ral 7016



light grey textured
ral 7004



white textured
ral 9016



white matte
ral 9016



ivory matte
ral 1015



green glossy
ral 6003



The high power LEDs are positioned and angled to provide maximum light output.

The body and head of the fixture are made of die cast aluminium, while the recessing tube is made of steel to withstand the repeated impact of driving vehicles tires.

6 standard RAL colors can be chosen from to adapt the spots to their environment (grey, anthracite, black, white, green and beige).

global network

central region

germany

LAMP 83 Deutschland GmbH
Am Weihergraben 10
74363 Güglingen
tel: +49(0)7135 93 06 192
fax: +49(0)7135 93 06 199
kontakt@lamp83.de

france

INEDIT Lighting
Le Studio, 25, rue de Cléry
75002 Paris
tel: +33(0)1 47 00 76 76
fax: +33(0)1 47 00 87 73
contact@inedit-lighting.com

united kingdom

RIDI Lighting Ltd
Units 8 & 9 ,The Marshgate
Centre, Parkway, Harlow
Essex, CM19 5QP
tel: +44(0)1279 450882
fax: +44(0)1279 451169
info@emfa.co.uk

turkey

EMFA -
Elektrik Malzeme Fabrikasi A.S.
Davutpasa Caddesi,
Cebealibey Sokak No. 18
34020 Topkapi / Istanbul
tel: +902124822962
fax: +902124822781
emfa@emfa.com.tr

lebanon

Simon Electric Center
Mar Mikael Armenia Street
tel: +961 1 560222 333
fax: +961 1 581644
simonel@cyberia.net.lb

saudi arabia

SmartHome Trading
P O Box 43262
11561 Riyadh
tel: +966 11 201 2005
fax: +966 11 201 2414
care@smarthomeco.com

ireland

Lidacel Ltd
Unit 18 Willow Business Park,
Nangor Road, Dublin 12
tel: +353 1 4605 342
fax: +353 1 4605344
sales@lidacel.com

belgium

EURO-LUCE
Heirbaan 38, B-1570
Galmaarden, Belgium
tel: +32 54 55 71 10
fax: +32 54 55 71 15
info@euro-luce.be
www.euro-luce.eu

russia

International Lighting Solutions
Zvonarskij Pereulok House 1/1
Moscow
tel: +7 903 7926341
fax: +7 903 7926341
9706028@mail.ru

qatar

Beyond Lighting Co.
Airport Road, Doha
tel: +974 44664434
fax: +974 44673882
info@beyondlighting.net

mauritius

EME Engineering Ltd
95 Victoria Avenue,
Quatre Bornes
tel: +2304679001
fax: +2304679002
nizamm@ememauritius.com

global network

western region

canada

NOVUS DESIGN Inc.
385 St-Hubert, Laval,
H7G 2Y8, Quebec
tel: +1 888 668 8787
fax: +1 888 668 5454
ary@novuslighting.com

united states

NOVUS DESIGN Inc.
385 St-Hubert, Laval,
H7G 2Y8, Quebec
tel: +1 888 668 8787
fax: +1 888 668 5454
ary@novuslighting.com

caribbean islands

Electec
29 Wellington Road,
Cole Bay, St Maarten
tel: +1 721 544 2051
fax: +1 71 544 3641
sales@electec.info

colombia

LED-LS COLOMBIA
Carrera 14 #93-40, Of. 503
Bogotá
tel: COL +(57)(1) 636-0566
USA +1(305) 3573252
info@led-ls.com

peru

LED-LS PERU
Av. Reducto 1310, Of. 303
Lima, Perú
tel: PERU +(51)(1) 242-2630
USA +1(305) 3573252
info@led-ls.com

chile

LED-LS CHILE
La Concepción 141, Oficina 605
Providencia, Santiago de Chile
tel: CHIL +(56)(2) 2369706
USA +1(305) 3573252
info@led-ls.com

eastern region

russia

International Lighting Solutions
Zvonarskij Pereulok House 1/1,
Moscow
tel: +7 903 7926341
fax: +7 903 7926341
9706028@mail.ru

south korea

bara corporation
410 GoldTower B/D,
Manyeondong,
Seogu, Daejeon
tel: +82 42 482 4337
fax: +82 42 482 4336
bara_co@naver.com

hong kong

SPL Lighting Company Ltd
1401 Harbour Centre, 25
Harbour Road, Wanchai
tel: +852 3529 1623
fax: +852 3529 1222
info@splighting.com.hk

macau

GEOTECH Lighting & System Co.
Ltd.
Av. da Praia Grande No. 763,
Edf. Lun Pong 14-Andar-D, S.A.R
tel: +853 2835 6562
fax: +853 2835 6563
info@geotechmacau.com

new zealand

Decor Bellini Lighting Ltd
96 New North Road,
Eden Terrace, Auckland
tel: +64 9 3361504
fax: +64 9 3361581
info@decorbellini.co.nz

headquarters

EMFA
Elektrik Malzeme Fabrikasi A.S.

Davutpasa Caddesi
Cebealibey Sokak No. 18
34020 Topkapi / Istanbul
Turkey

tel: +90 212 4822962
fax: +90 212 4822781

emfa@emfa.com.tr

EMFA
crafting light 