

TEOS RECESSED DRIVE OVER FIXTURES

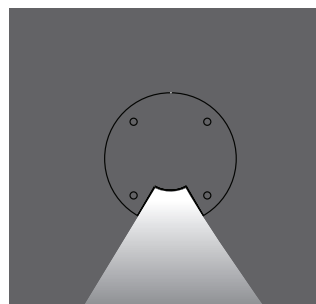
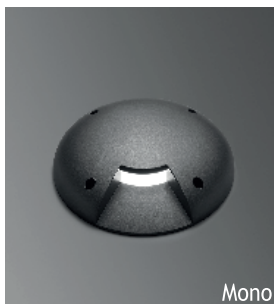
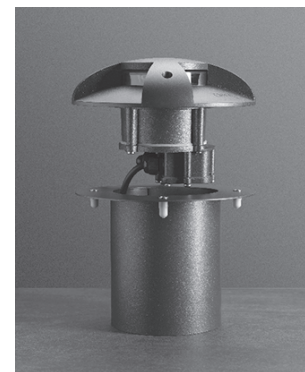
Load 50 kN | Class I IP67 IK10

Available in any of these RAL colors

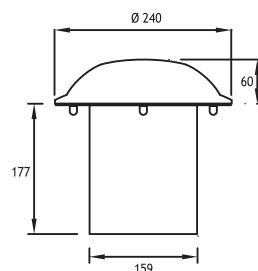
7004	7016	9005	9016	6002	1015
------	------	------	------	------	------

EMFA's Teos 3 Recessed Drive Over LED Fixture is specially designed to deliver high output LED light to ground surfaces of roads, carparks and pathways. This heavy duty fixture is designed to withstand the weight of large vehicles. Its robust construction allows for a maximum static load of 5000kg. The body and head of the fixture are made of die cast aluminium, while the recessing tube is made of steel to withstand the repeated impact of driving vehicles' tires. The high power LEDs are positioned and angled to provide maximum light output. The electronic LED driver is housed in the base of the fixture. The fixture comes with 2 x PG13.5 cable glands and 0.5m cable.

Cover	Die cast aluminium	Screws	316L Stainless steel
Body	Die cast aluminium	Glands	2 x PG 13.5
Gaskets	Silicone	Cable	0.5m 3x0,75 mm H05VV-F
Diffusers	Polycarbonate	Recessing Tube	Electrostatic powder paint Coated steel



			Total Lighting Output	Code No
Mono	1 x 350 mA (4W) LED	3000 K	165 lm	180101



LEDs

Only highest quality LEDs such as Cree or Toplite are used in production allowing for maximum lumen output and maximum lifetime. Most LEDs run on 350mA or 700mA depending on how much light output is required. The white color temperature binning is 200K at most, and always on the same x,y coordinates on the CIE diagram in accordance with Energy Star. This ensures consistent supply of the same color temperature over time. As LEDs are constantly developing and becoming more efficient, lumen output given in this catalogue are current as of March 2020. At 2700K, 3000K, and 4000K LED lumen output per led is 110lm; at 6000K the lumen output per led is 125lm. Total Lighting Output as printed in this catalogue is the actual light output of the entire fixture. The minimum CRI of the LEDs used is 85 with a majority of products over 90.

Thermal Management

All fixtures are designed to withstand ambient temperatures of at least 50°C. The LEDs are mounted on metal core pcbs, which are mounted the aluminium body of the fixture so that the entire fixture acts as a heat sink. Extensive testing is performed in EMFA's laboratory to ensure these values are maintained so that the lifetime of the LED is not compromised.