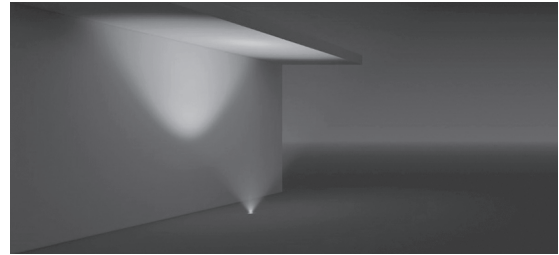
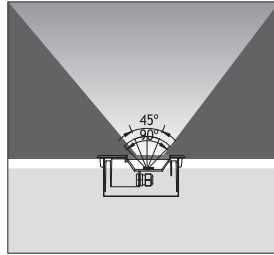


ANI RECESSED WALK OVER FIXTURES

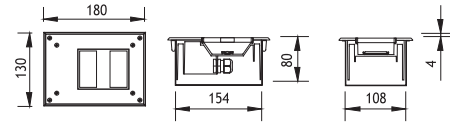
Load 2 kN | Class I IP67 IK10

Symmetrical

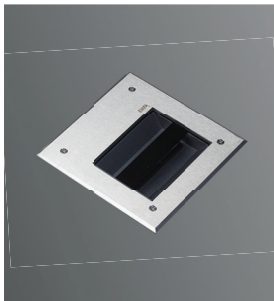
- Led** : Linear LEDs
- Voltage** : 240 VAC with integrated driver
(12-24 VDC on request)
- Diffuser** : 8mm Tempered Glass
- Beam Angle** : 45° / 60° / 90°
- Mac Adam** : 3
- CRI** : >80
- L.O.R %** : %70



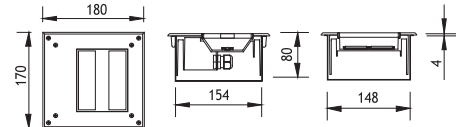
ANI 1			Real Lumen Output	Nominal Lumen Output
Power	Code No	Kelvin		
6W	451001	☀ 3000 K	600 lm	850 lm
12W	451011	☀ 3000 K	1020 lm	1460 lm
6W	451002	☾ 4000 K	690 lm	977 lm
12W	451012	☾ 4000 K	1173 lm	1679 lm



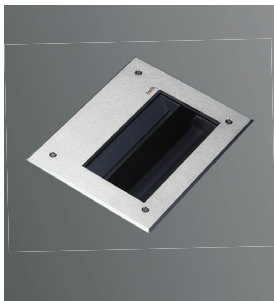
Galvanized Recessing Box



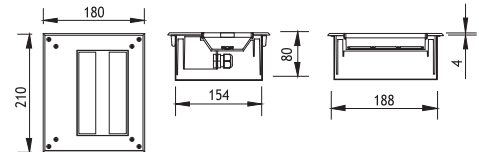
ANI 2			Real Lumen Output	Nominal Lumen Output
Power	Code No	Kelvin		
12W	451101	☀ 3000 K	1020 lm	1460 lm
24W	451111	☀ 3000 K	1780 lm	2550 lm
12W	451102	☾ 4000 K	1173 lm	1679 lm
24W	451112	☾ 4000 K	2047 lm	2932 lm



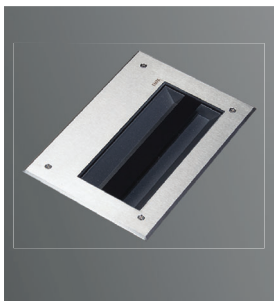
Galvanized Recessing Box



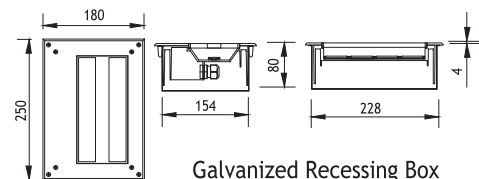
ANI 3			Real Lumen Output	Nominal Lumen Output
Power	Code No	Kelvin		
18W	451201	☀ 3000 K	1200 lm	1700 lm
36W	451211	☀ 3000 K	2300 lm	3300 lm
18W	451202	☾ 4000 K	1380 lm	1955 lm
36W	451212	☾ 4000 K	2645 lm	2932 lm



Galvanized Recessing Box



ANI 4			Real Lumen Output	Nominal Lumen Output
Power	Code No	Kelvin		
24W	451301	☀ 3000 K	1780 lm	2550 lm
48W	451311	☀ 3000 K	3080 lm	4300 lm
24W	451302	☾ 4000 K	2047 lm	2932 lm
48W	451312	☾ 4000 K	3542 lm	5060 lm



Galvanized Recessing Box