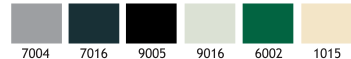


# SQUARE MINI LED APPLIQUES

## LED DRIVER IN HADE

### Class I IP65 IK10

Available in any of these RAL colors



#### “Customization” is EMFA’s standard

EMFA offers many combinations for each fixture, as all fixtures are made in house. A combination of 6 standard paint colors, 8 LED colors, 2 wattages, and 5 or more lenses and reflectors are available to make the fixture suitable for the required application. This is done without increasing lead-time and is available for large as well as small quantities.

#### Body

Die cast aluminium

#### Paint

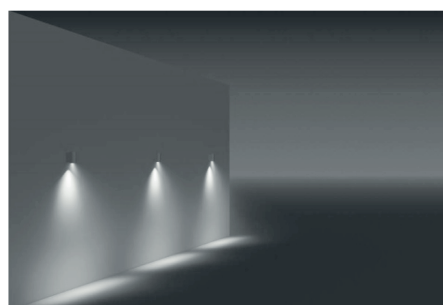
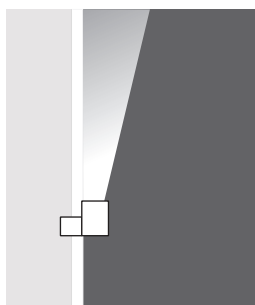
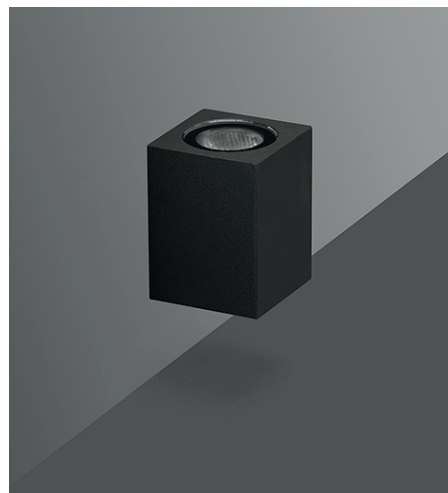
Electrostatic powder

#### Gaskets

Silicone

#### Diffusers

Tempered Glass



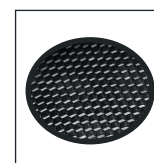
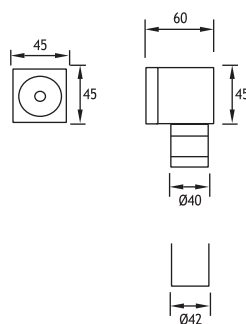
**Voltage** : 240V A.C with integrated driver  
(24V AC or DC on request)

**Lens** : 10°, 25°, 40°

**Diffuser** : Clear Glass 8 mm (Frosted Glass on request)

**Cable** : Potted 2 m 3x0,75 H03 VV-F

		Total		Code No
		Lighting Output		
1 x 350 mA (1 W) LED		1W	3W	3W
☀ Cool White	6000 K	102 lm	270 lm	298013



**Honeycomb**  
Code No: 953541

Aluminium Recessing Box