

SANTOS 6

WALL RECESSED FIXTURES

Class I IP67 IK10

EMFA's Santos 6 Wall Recessed Fixture is specially designed to deliver glare-free lighting in open areas and pathways. The combination of the ribbed glass, which creates a horizontal elliptical light output and the lamp cover, which hides the source of light, allows for an unobtrusive comfortable lighting effect. The fixture is made of a combination of 316L stainless steel and aluminium. The narrow depth of 159 mm allows the fixture to be installed in most walls. The electronic ballast is housed in the thermally separated base of the fixture.

Cover

316L Stainless steel

Body

Die cast aluminium or aluminium profile with die cast aluminium bottom and connection box.

Gaskets

Silicone

Diffusers

5 mm ribbed tempered Glass

Screws

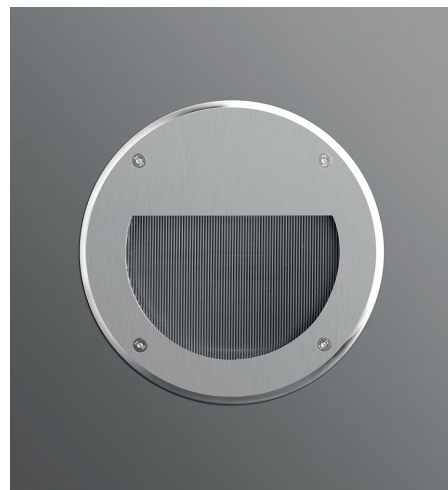
316L Stainless steel

Glands

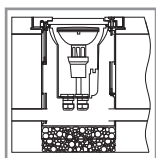
2 x PG 13.5

Recessing Tube

Polyamide 6



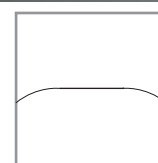
Mounting Feature



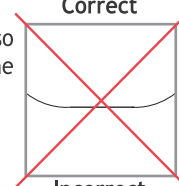
Provide at least 30 cm of drainage gravel to avoid the accumulation of water under the fixture.

To make the fixture drive over, the recessing tube should be mounted flush to the ground.

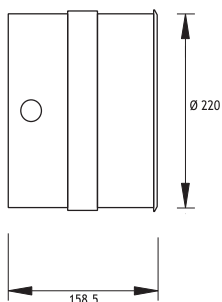
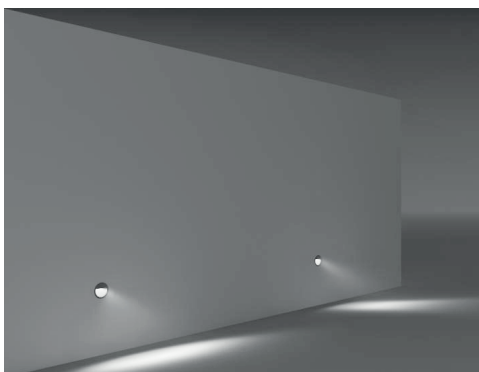
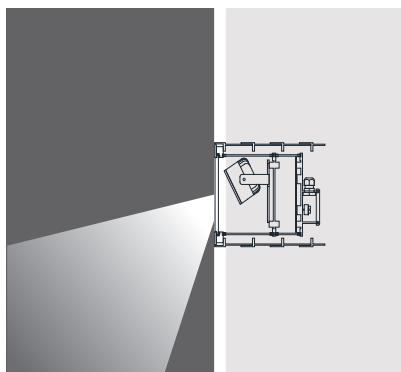
When mounting the fixture on uneven surfaces, place so that the water does not accumulate on the surface of the fixture.



Correct



Incorrect



Voltage : 240V AC with integrated driver
(12V DC or 24V DC on request)

Reflector : -

Temp : 45°C

12W LED - 350 mA

Round

△ Natural White 4000 K 552122