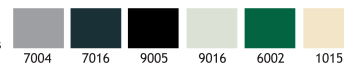


MILET

WALL RECESSED FIXTURES IP55 IK08

Available in any
of these RAL colors



The Milet Recessed Wall Series is specially designed to deliver low glare halogen lighting to steps, open areas, corridors and pathways. The fixture has a die cast aluminium body painted with electrostatic powder paint. The slated or open covers come in an aluminium or aluminium / stainless steel finish. A polycarbonate recessing box is included for installation into concrete. The cable on site can be securely connected to the fixture via a PG9 cable gland.

Cover

Die cast aluminium / Inox (Stainless steel)

Paint

Black or grey electrostatic powder

Body

Die cast aluminium

Recessing Box

Polycarbonate

Glands

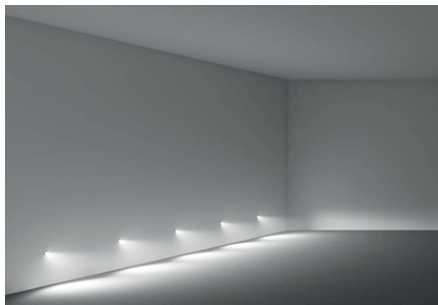
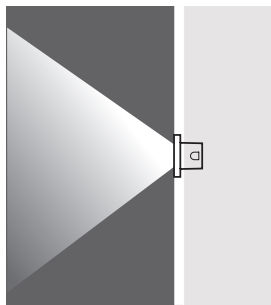
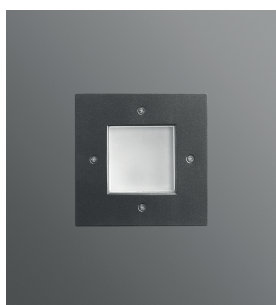
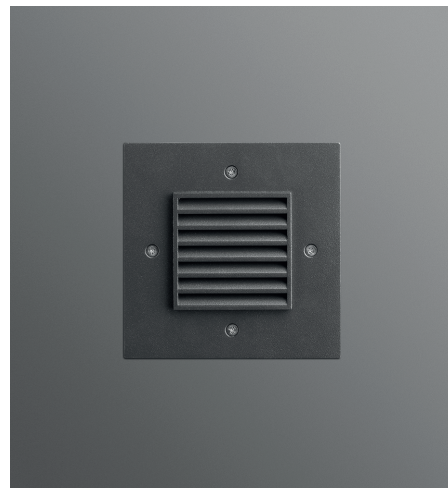
1 X PG 9

Gaskets

Silicone

Diffusers

4 mm Tempered Glass

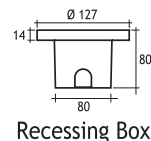
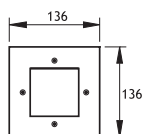


Lampholder : Gu 5.3

Reflector : -

Diffuser : Clear Glass

CLASS III



Recessing Box

HALOGEN 12V 35W

Code No

Stainless Steel

306111