

KNIDOS SURFACE MOUNTED FIXTURES

Class I IP67 IK10

The Knidos Surface Mounted Uplighter, completely made of 316L stainless steel is ideal for areas where corrosive agents such as salt water or fertilizers would harm aluminium fixtures. The fixture can be mounted without harm to any surface and therefore is ideal for protected and historical sites where mounting recessed fixtures is not permitted.

Cover

316L Stainless steel

Outer Body

316L Stainless steel

Inner Body

Glass reinforced polyester

Diffusers

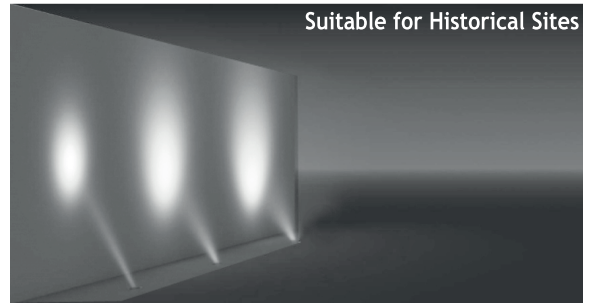
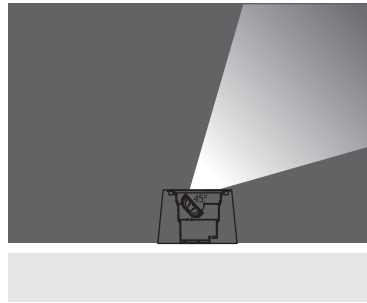
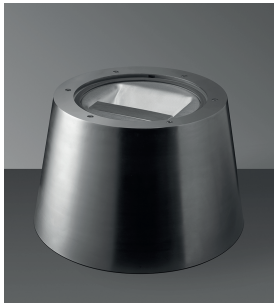
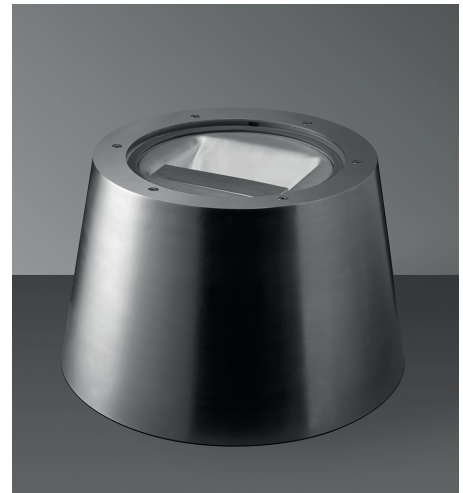
12 mm Tempered Glass

Gaskets

Silicone

Screws

316L Stainless Steel



9 x 350 mA (9 W) LED

Voltage : 240V AC with integrated driver
(24V AC or DC on request)

Lens : 10°, 25°, 40°

Diffuser : 12 mm Clear Glass (Frosted Glass on request)

9 x 350 mA (9 W) LED		Total Lighting Output	Code No
🌊 Cool White	6000 K	918 lm	257243

